



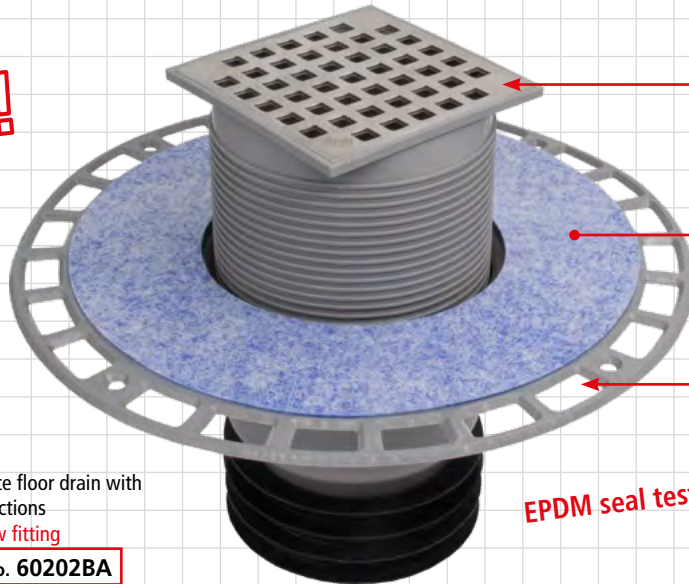
Because it's easier!

Airfit

Issue 58

Floor drain with attached sealing fleece and four connection options

NEW!



Stainless steel drain grate K3
100 x 100 mm

Attached sealing fleece for an
optimal floor sealing connection

Slanted opening for optimum
screed bonding

EPDM seal tested according to EN 681.



Made of 100%
new materials,
durable, PP, from
EU-production.



Complete floor drain with
4 connections
no screw fitting
Item no. 60202BA



Complete floor drain with
4 connections
screwed
Item no. 60203BA

The siphon bell can be
removed for cleaning

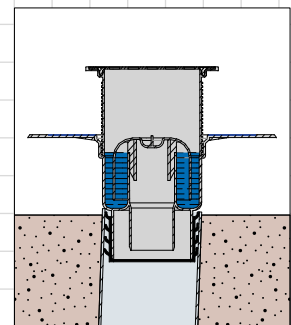
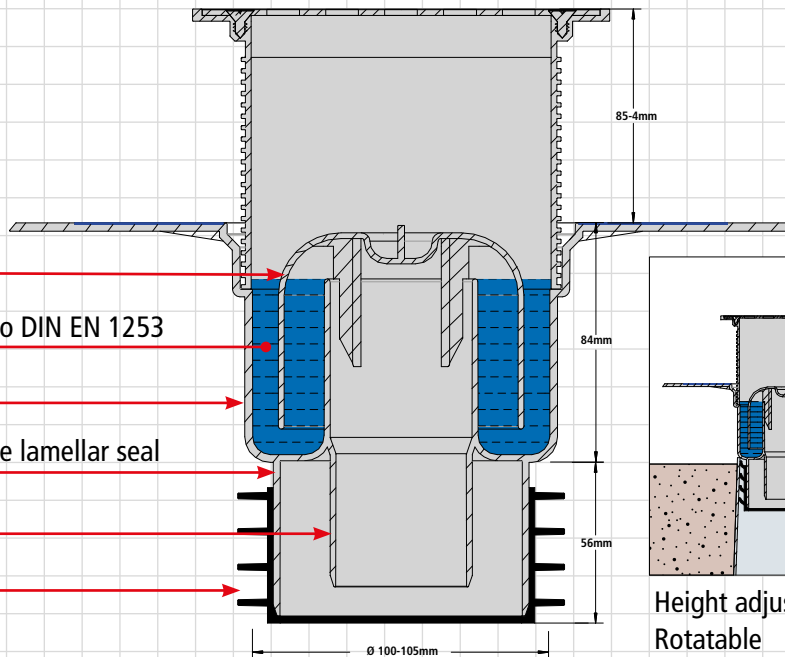
50 mm water trap height according to DIN EN 1253

Sleeve connection DN 110

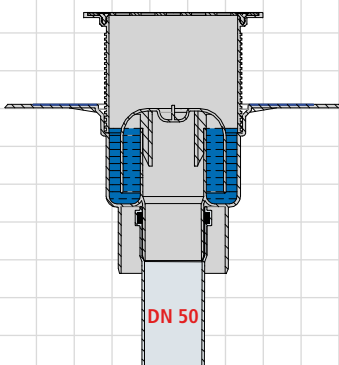
Sleeve connection DN 90, Remove the lamellar seal

Sleeve connection DN 50

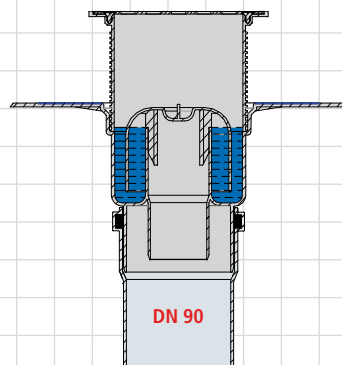
Spigot DN 110



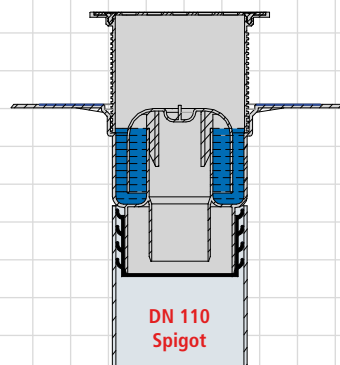
Height adjustable
Rotatable
Tiltable



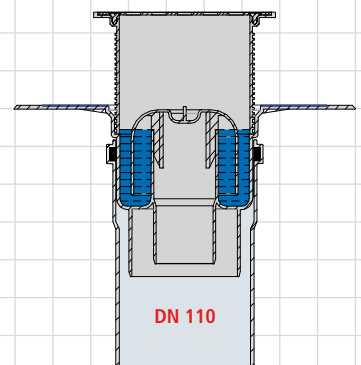
DN 50



DN 90



DN 110
Spigot



DN 110

Fire behaviour: Tested according to DIN 4102-B2, EN 13501-1E, EN 11925-2

Because it's easier!



Universal Seals Case Water Heating Gas



Item no. 70000DK

- EU quality
- Approval according to DVGW, ELL, W270
- Sturdy PP case filled on both sides
- Minimum thickness of the seals: 2 mm
- Around 800 seals

Filled with everything you could ever really need.

All flat seals can be reordered in bags of 50. All tap seals can be reordered in bags of 25.

Armaturenfett Tube 23g Art. Nr. 70520ED	Hahnscheibe 11x4 ELL, W270 Art. Nr. 70521ED	Hahnscheibe 13x4 ELL, W270 Art. Nr. 70522ED	Hahnscheibe 14x4 ELL, W270 Art. Nr. 70523ED	Hahnscheibe 15x4 ELL, W270 Art. Nr. 70524ED	Hahnscheibe 16x4 ELL, W270 Art. Nr. 70525ED	Hahnscheibe 17x4 ELL, W270 Art. Nr. 70526ED
	Hahnscheibe 13x4 ELL, W270 Art. Nr. 70527ED	Hahnscheibe 24x4 ELL, W270 Art. Nr. 70528ED	Hahnscheibe 28x4 ELL, W270 Art. Nr. 70529ED	Wassermesser-D. PE 29x23x2 3/4" Kalt Art. Nr. 70532ED		
Brauseschlauch 19x12x2 1/2" ELL, W270 Art. Nr. 70530ED	Brauseschlauch 24x12x2 3/4" ELL, W270 Art. Nr. 70531ED	Verschraubungs-D. 18x13x2 1/2" DVGW, ELL, W270 ca.220°C bei 10bar Art. Nr. 70549ED	Verschraubungs-D. 29x23x2 3/4" DVGW, ELL, W270 ca.220°C bei 10bar Wassermesser-D Warm Art. Nr. 70534ED	Wassermesser-D. PE 24x17x2 1/2" Kalt Art. Nr. 70533ED	Verschraubungs-D. 24x17x2 3/4" DVGW, ELL, W270 ca.220°C bei 10bar Wassermesser-D Warm Art. Nr. 70548ED	SBR 39x30x2 WT-Siphon 1 1/4" Art. Nr. 70540ED
Verschraubungs-D. 15x10x2 3/4" DVGW, ELL, W270 ca.220°C bei 10bar Art. Nr. 70550ED			www.airfit.eu			Verschraubungs-D. 24x15x2 3/4" DVGW, ELL, W270 ca.220°C bei 10bar Art. Nr. 70504ED

Verschraubungs-D. 44x32x2 DVGW, ELL, W270 ca.220°C bei 10bar Art. Nr. 70544ED	45 St.	Gashahn- Verschraubungs-D., NBR 50,5x39x2 1" DVGW Art. Nr. 70507ED	15 St.	Verschraubungs-D. 38x27x2 DVGW, ELL, W270 ca.220°C bei 10bar Art. Nr. 70505ED	15 St.
Verschraubungs-D. 55x42x2 DVGW, ELL, W270 ca.220°C bei 10bar Art. Nr. 70542ED	30 St.	Gashahn- Verschraubungs-D., NBR 55x45x2 1" DVGW Art. Nr. 70506ED	15 St.	Verschraubungs-D. 38x30x2 DVGW, ELL, W270 ca.220°C bei 10bar Art. Nr. 70545ED	15 St.
Gashahn- Verschraubungs-D., NBR 27,5x20x2 1/2" DVGW Art. Nr. 70553ED	30 St.	Gashahn- Verschraubungs-D., NBR 34,5x25x2 3/4" DVGW Art. Nr. 70551ED	31 St.	Gashahn- Verschraubungs-D., NBR 41x31x2 1" DVGW Art. Nr. 70552ED	15 St.
Verschraubungs-D. 30x21x2 DVGW, ELL, W270 ca.220°C bei 10bar Art. Nr. 70503ED	39 St.	www.airfit.eu		Verschraubungs-D. 27x13x2 DVGW, ELL, W270 ca.220°C bei 10bar Art. Nr. 70547ED	39 St.

Universal O-ring assortment

Item no. 70001DK

Item no. 70001DK

Tested quality, of course!



according to
DIN ISO 3601-1

Airfit

Universal O-ring assortment

Number	Piece	ID	SD	Number	Piece	ID	SD
R-01	20	3,15	1,80	R-17	10	22,40	3,55
R-02	20	4,00	1,80	R-18	10	23,60	3,55
R-03	20	5,00	1,80	R-19	10	25,00	3,55
R-04	20	6,00	1,80	R-20	10	26,50	3,55
R-05	20	7,10	1,80	R-21	10	28,00	3,55
R-06	20	8,00	1,80	R-22	10	30,00	3,55
R-07	20	10,00	1,80	R-23	10	31,50	3,55
R-08	16	10,00	2,65	R-24	10	32,50	3,55
R-09	16	11,20	2,65	R-25	10	34,50	3,55
R-10	16	11,80	2,65	R-26	10	35,50	3,55
R-11	15	14,00	2,65	R-27	10	37,50	3,55
R-12	12	16,00	2,65	R-28	10	40,00	3,55
R-13	12	17,00	2,65	R-29	10	42,50	3,55
R-14	12	19,00	2,65	R-30	10	45,00	3,55
R-15	10	19,00	3,55	R-31	10	47,00	3,55
R-16	10	20,00	3,55	R-32	10	50,00	3,55

- Tested according to DIN ISO 3601-1
- Oil-resistant
- Metric
- NBR material
- Resistant to water up to 100°C
- 32 different sizes
- 419 seals

Because it's easier!

Airfit

Universal Seals Case, PROFI Sanitary Heating Solar Gas

CONTENTS

Fibre seal DVGW, ELL, W270

25pcs. 55x42x2	Item no. 70542ED
25pcs. 44x32x2	Item no. 70544ED
25pcs. 38x30x2	Item no. 70545ED
25pcs. 30x21x2	Item no. 70503ED
25pcs. 29x23x2	Item no. 70534ED
25pcs. 27x19x2	Item no. 70502ED
25pcs. 24x15x2	Item no. 70504ED
25pcs. 24x17x2	Item no. 70548ED
50pcs. 18x13x2	Item no. 70549ED
50pcs. 15x10x2	Item no. 70550ED
Gas fixtures seal NBR DVGW	
25pcs. 41x31x2	Item no. 70552ED
25pcs. 34,5x25x2	Item no. 70551ED
25pcs. 27,5x20x2	Item no. 70553ED

Solar fibre seal DVGW

25pcs. 44x30x2	Item no. 70554ED
25pcs. 30x21x2	Item no. 70555ED
25pcs. 24x15x2	Item no. 70556ED
25pcs. 18x12x2	Item no. 70557ED
25pcs. 15x10x2	Item no. 70558ED

Siphon seal

25pcs. 45x35x2 1/1/2"	Item no. 70541ED
25pcs. 39x30x2 1/1/4"	Item no. 70540ED

Water flow metre seal PE cold water

25pcs. 29x23x2	Item no. 70532ED
25pcs. 24x17x2	Item no. 70533ED

Shower hose screw connection, ELL, W270

25pcs. 24x12x2 3/4"	Item no. 70531ED
50pcs. 19x12x2 1/2"	Item no. 70530ED

Filled with everything you could ever really need.

- EU quality
- Approval according to ELL, DVGW, W270
- Minimum thickness of the seals **2 mm**

Item no. 70004DK



Universal Seals Case, JUNIOR Sanitary Heating Solar Gas

CONTENTS

Fibre seal DVGW, ELL, W270

12pcs. 55x42x2	Item no. 70542ED
12pcs. 44x32x2	Item no. 70544ED
12pcs. 38x30x2	Item no. 70545ED
12pcs. 30x21x2	Item no. 70503ED
12pcs. 29x23x2	Item no. 70534ED
12pcs. 27x19x2	Item no. 70502ED
12pcs. 24x15x2	Item no. 70504ED
12pcs. 24x17x2	Item no. 70548ED
24pcs. 18x13x2	Item no. 70549ED
24pcs. 15x10x2	Item no. 70550ED
Gas fixtures seal NBR DVGW	
12pcs. 41x31x2	Item no. 70552ED
12pcs. 34,5x25x2	Item no. 70551ED
12pcs. 27,5x20x2	Item no. 70553ED

Solar fibre seal DVGW

12pcs. 44x30x2	Item no. 70554ED
12pcs. 30x21x2	Item no. 70555ED
12pcs. 24x15x2	Item no. 70556ED
12pcs. 18x12x2	Item no. 70557ED
12pcs. 15x10x2	Item no. 70558ED

Siphon seal

12pcs. 45x35x2 1/1/2"	Item no. 70541ED
12pcs. 39x30x2 1/1/4"	Item no. 70540ED

Water flow metre seal PE cold water

12pcs. 29x23x2	Item no. 70532ED
12pcs. 24x17x2	Item no. 70533ED

Shower hose screw connection, ELL, W270

12pcs. 24x12x2 3/4"	Item no. 70531ED
24pcs. 19x12x2 1/2"	Item no. 70530ED

Filled with everything you could ever really need.

- EU quality
- Approval according to ELL, DVGW, W270
- Minimum thickness of the seals **2 mm**

Item no. 70003DK



Universal Seals Case Sanitary Heating Solar

CONTENTS

Fibre seal DVGW, ELL, W270

12pcs. 55x42x2	Item no. 70542ED
12pcs. 44x32x2	Item no. 70544ED
12pcs. 38x30x2	Item no. 70545ED
12pcs. 30x21x2	Item no. 70503ED
12pcs. 29x23x2	Item no. 70534ED
12pcs. 24x15x2	Item no. 70504ED
12pcs. 24x17x2	Item no. 70548ED
24pcs. 18x13x2	Item no. 70549ED
12pcs. 15x10x2	Item no. 70550ED
Siphon seal	
12pcs. 45x35x2 1/1/2"	Item no. 70541ED
12pcs. 39x30x2 1/1/4"	Item no. 70540ED

Water flow metre seal PE cold water

12pcs. 29x23x2	Item no. 70532ED
12pcs. 24x17x2	Item no. 70533ED

Shower hose screw connection, ELL, W270

12pcs. 24x12x2 3/4"	Item no. 70531ED
24pcs. 19x12x2 1/2"	Item no. 70530ED

Solar fibre seal DVGW

12pcs. 24x15x2	Item no. 70556ED
12pcs. 18x12x2	Item no. 70557ED
12pcs. 15x10x2	Item no. 70558ED

Filled with everything you could ever really need.

- EU quality
- Approval according to ELL, DVGW, W270
- Minimum thickness of the seals **2 mm**

Item no. 70005DK



All flat seals can be reordered in bags of 50.

Because it's easier!

Optimal reducing adapter made of PP

NEW!



Made of 100% new materials, durable, PP, from EU-production.



CE seal according to EN 681

Branch saddle set suitable for all pipe materials with matching exterior diameter



- Easy to install • Time-saving • Hot-water resistant

Set DN 75 x 50 Saddle length 103 mm
Also fits on SML DN 70 and DN 80

Item no. 28755SA

Set DN 160x50 Saddle length 103 mm
Also fits on stoneware DN 125

Item no. 28165SA

Accessories: Circle cutter Ø 48 mm

HSS bimetallic, complete, for plastic and metal. When working on metal pipes, use lower speeds and cutting oil.

Item no. 21048KS



Set DN 110x90 Saddle length 150 mm
Also fits on SML DN 110

Item no. 28119SA

Set DN 125x90 Saddle length 150 mm
Also fits on stoneware DN 100

Item no. 28129SA

Set DN 160x90 Saddle length 150 mm
Also fits on stoneware DN 125

Item no. 28169SA

Accessories: Circle cutter Ø 86 mm

HSS bimetallic, complete, for plastic and metal. When working on metal pipes, use lower speeds and cutting oil.

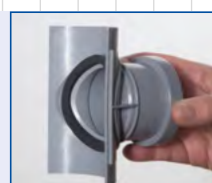
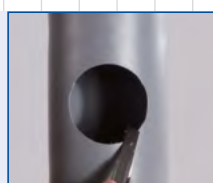
Item no. 21086KS



Accessories: Circle cutter Ø 86 mm

Hard-metal keyhole saw complete with shank for stoneware pipe

Item no. 22086KS



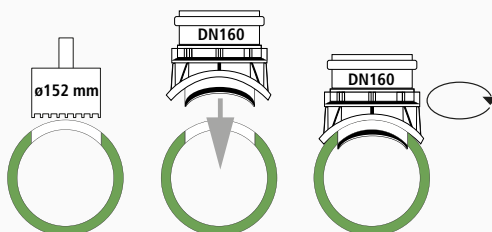
Simple installation: Drill hole, deburr, place the branch saddle on the pipe, fit the hose clamps and tighten lightly. AND THAT'S IT!

Because it's easier!

Airfit

Airfit branch plug for underground waste pipes

NEW!



Circle cutter

Drilling depth 47 mm
HSS bimetallic, complete, for plastic and metal. When working on metal pipes, use lower speeds and cutting oil.



Accessories:

Outflow DN 160
Circle cutter Ø 152 mm

Item no. 21152KS



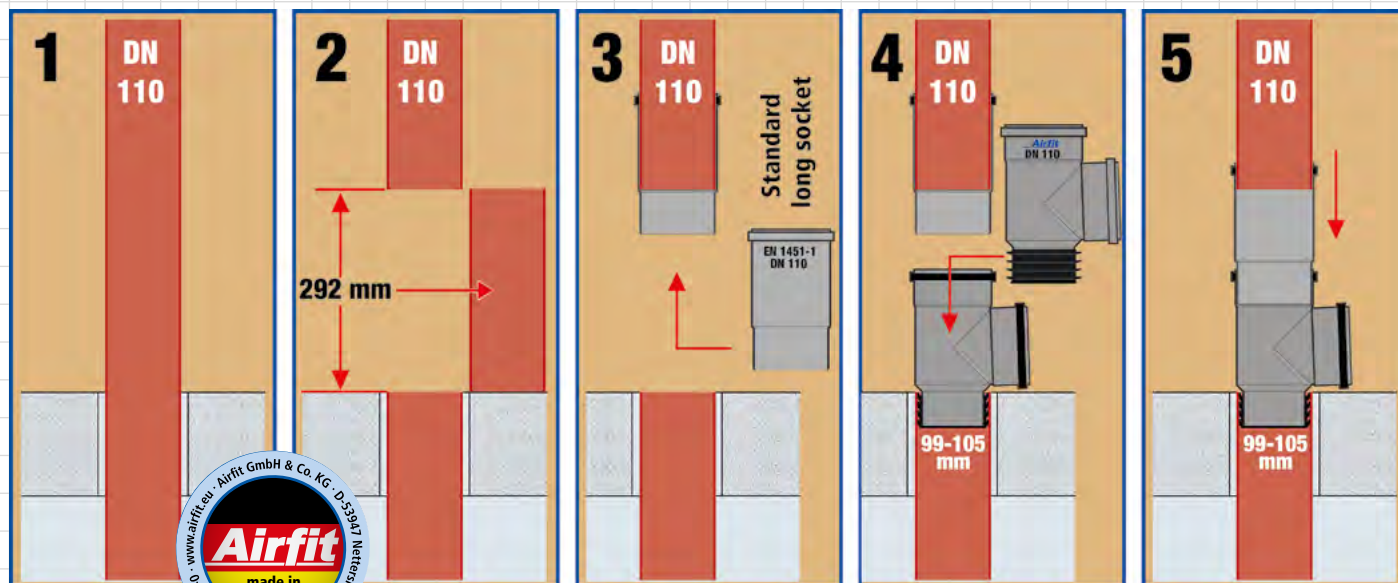
Accessories:

Assembly spanner

Item no. 27000MS

	For plastic pipe: KG2000 , PVC EN1401 , PE , PP EN1852				Stoneware pipe	
DN	200/160	250/160	315/160	400/160	200/160	250/160
Item no.	27206AZ	27256AZ	27316AZ	27406AZ	27216AZ	27516AZ
Wall thickness mm	3 - 9	3 - 15	3 - 15	3 - 18	15 - 28	20 - 37
Installation length mm	202	290	290	290	290	290
Outer ø mm	200	250	315	400	242 - 254	290 - 318

Airfit branch plug • Waterproof to at least 5 meter water column • Space-saving



Low installation height
232 mm

DN 110/110

Item no. 199110SA

DN 110/90

Item no. 199090SA

DN 110/75

Item no. 199075SA

DN 110/50

Item no. 199050SA

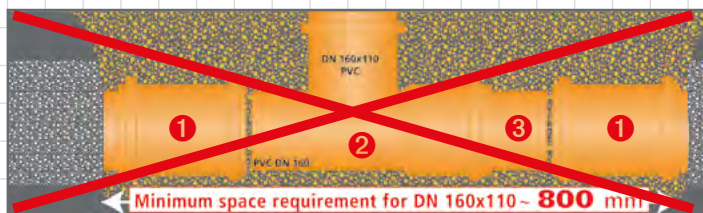
CE seal according to EN 681

Tested and approved by the DIBt Z-42.1-394

Because it's faster!



The problem: Retrofitting branches or cleaners means you need extra room for ❶ two sliding sleeves ❷ branch connection ❸ pipe connector ❹ and room to advance the sliding sleeves.



The solution!
Time savings
~1 hour



The benefits:

- Two-thirds less earthworks required.
- No need for sawing twice.
- No more leakages.
- Two sliding sleeves are no longer necessary.

The solution: Adhesive branch made of PVC-U

For 45° branches, the inlet opening is cut out with a jigsaw or an angle grinder.



Adhesive clips branch 45°

DN 110x90

Item no. 451190KA



Adhesive branch 45°

DN 160x125	Item no. 456125KA
DN 200x125	Item no. 452125KA
DN 200x160	Item no. 452160KA
DN 250x125	Item no. 452512KA
DN 250x160	Item no. 452516KA
DN 315x125	Item no. 453112KA
DN 315x160	Item no. 453160KA
DN 400x125	Item no. 454125KA
DN 400x160	Item no. 454160KA
DN 500x125	Item no. 455125KA
DN 500x160	Item no. 455160KA

Adhesive branch 90°

DN 125x110	Item no. 130110KA
DN 160x110	Item no. 165110KA

Adhesive branch 90°

DN 200x160	Item no. 160200KA
DN 250x160	Item no. 160250KA
DN 315x160	Item no. 160315KA
DN 400x160	Item no. 160400KA

Accessories:

Outflow DN 110, Circle cutter Ø 106 mm

Item no. 20106KS

Accessories: Circle cutter

HSS bimetallic, complete, for plastic and metal. When working on metal pipes, use lower speeds and cutting oil.

Item no. 21152KS

Accessories:

Outflow DN 160, Circle cutter Ø 152 mm



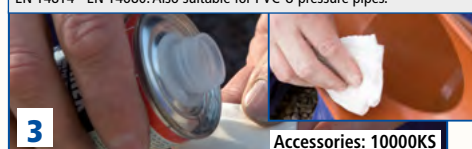
Adhesive set Item no. 10000KS consists of:
• PVC-U adhesive 125 ml • PVC-U solvent 125 ml • Cloths EN 14814 - EN 14680. Also suitable for PVC-U pressure pipes.

CE

Assembly instructions for adhesive branch 45°:

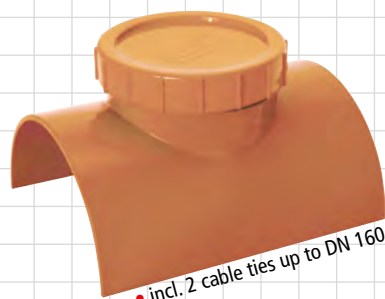


Align the adhesive fitting on the pipe, press into place and fix with the supplied cable ties. Remove any excess adhesive.



Observe the instructions of the glue manufacturer.

Glue cleaner made of PVC-U



Glue cleaner

DN 125 BL 210	Item no. 12500KR
DN 160 BL 210	Item no. 16000KR

BL = Installation length in mm

Glue cleaner

DN 200 BL 323	Item no. 20010KR
DN 250 BL 319	Item no. 25000KR
DN 315 BL 319	Item no. 31500KR
DN 400 BL 320	Item no. 40000KR

Accessories:

Circle cutter Ø 110 mm

Item no. 20110KS



Item no. 21152KS

Accessories:

Circle cutter Ø 152 mm

The original!



Airfit

The only approved wastewater interior reducers for horizontal installation that DO NOT NEED A SLEEVE!

The typical problem on almost every construction site:

conventional



Airfit

20 times
quicker
installation!

1. Mortise the drain pipe in the floor plate to the next sleeve with the caulking hammer.
2. Use force to pull out the drain pipe.
3. Clean sleeve and sealing element.
4. Insert reducer.
5. Measure the pipe connector.
6. Cut the pipe connector to size.
7. Insert the pipe connector.
8. Remove rubble.
9. Reseal the floor plate with concrete.

Airfit Wastewater interior reducer

1. Cut pipe flush to the ground with angle grinder.
2. Airfit waste water interior reducer – save time and money.

CE seal according
to EN 681

Time required: approx. 28 min.

Time required: approx. 1 min.

For thick-walled pipes

Suitable for:

- Wavin: SiTech-Rohr
- Dyka: PVC-U-Ultra-3
- Poloplast: Polo-Kal-Ng
- Piplife: Master 3
- Valsir: Tri-Plus
- Geberit: Silent-PP
- Geberit: Geberit-PE
- KG 2000, etc.

DN 110 x 50 Item no. 10850IR

DN 110 x 75 Item no. 10875IR

DN 110 x 90 Item no. 10890IR

DN 90 x 75 Item no. 10975IR

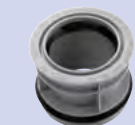
Tested and approved by the DIBt Z-42.1-366

*Fire behaviour: Tested according to DIN 4102-B2, EN 13501-1E, EN 11925-2.

The general construction approval from the DIBt Berlin verifies the usability of our reducers within the meaning of the federal state building regulations.

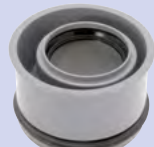
Friendly information from the managing director of Airfit, Josef Zimmermann, master gas and water pipe installer and central heating and ventilation engineer.

INFO!



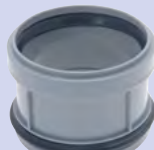
DN 75/50*

Item no. 7550IR



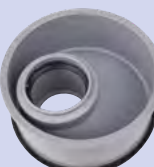
DN 90/50*

Item no. 9050IR



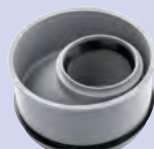
DN 90/75*

Item no. 9075IR



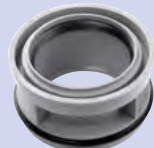
DN 110/40*

Item no. 11040IR



DN 110/50*

Item no. 11050IR



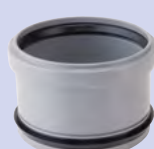
DN 110/75*

Item no. 11075IR



DN 110/90*

Item no. 11090IR



DN 125/110*

Item no. 125110IR



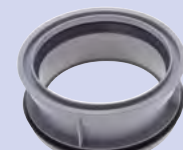
DN 160/50*

Item no. 16050IR



DN 160/110*

Item no. 160110IR



DN 160/125*

Item no. 160125IR



DN 200/160*

Item no. 200160IR



DN 125/110

Item no. 125110KG



DN 160/110

Item no. 160110KG



DN 160/125

Item no. 160125KG



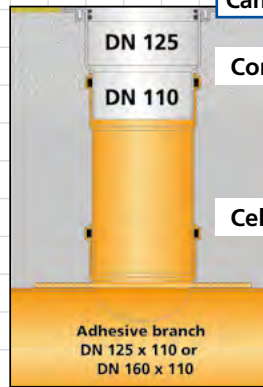
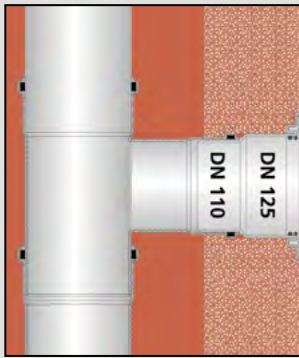
DN 200/160

Item no. 200160KG

Because it's easier!

The real all-rounder cleaner connection for internal and external use.

Wall installation



Can be driven over

Item no. 50300RVGU

Concrete

Cellar floor



Cleaner connection
125 or 110 **Stainless**

Item no. 50300RVA4 *



Cleaner connection
125 or 110 **grey** made of PP

Item no. 50300RVGU *



Cleaner connection
125 or 110 **green** made of PP

Item no. 50300RVGN

Item no. 160125IR



DN 160



DN 125



DN 110

UV-stabilised

Connecting sleeve DN 110/110 and DN 160/160

DN 110/110



Z-42.1-394

Connecting sleeve
DN 110/110

Item no. 110110S

DN 160/160



Z-42.1-394

Connecting sleeve
DN 160/160

Item no. 160160S

CE seal according
to EN 681



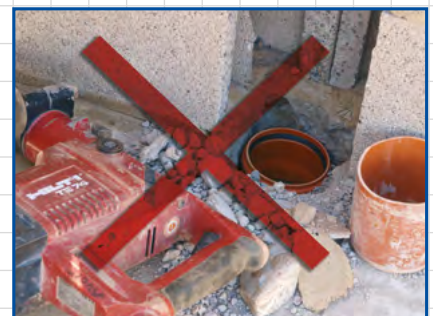
Typical problem in old buildings:

A free-standing WC needs to be replaced, but the sleeve in the ground is missing. The **Airfit** connecting sleeve is the ideal adapter for joining a drain pipe and WC pipe connection.



Typical problem in new buildings:

The sleeves on pipes that jut out of the floor plate are often damaged or missing.



*Fire behaviour: Tested according to DIN 4102-B2, EN 13501-1E, EN 11925-2.

The real all-rounder connecting sleeve

Airfit Plus for HT and thick-walled pipes

NEW!

DN 75/75

Item no. 7575S

for internal diameter
to 68,5 - 71,6 mm
offset 7,2 mm

- Particularly easy to install
- Time-saving
- Hot water resistant
- Made of PP

NEW!

DN 90/90

Item no. 9090S

for internal diameter
to 80,5 - 86 mm

DN 110/110

Item no. 111110S

for internal diameter
to 100 - 105 mm
offset 7,4 mm



CE seal according to EN 681

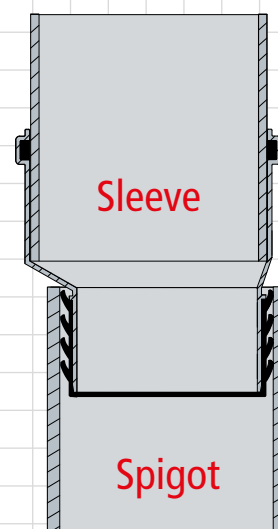
DN 125/125

Item no. 125125S

for internal diameter
to 113 - 119 mm
offset 8,6 mm



SML



Spigot



DN 100

Fire behaviour: Tested according to DIN 4102-B2, EN 13501-1E, EN 11925-2.

Angle connecting sleeve

Space- and time-saving



DN 110/110

Item no. 112110WS

DN 90/110

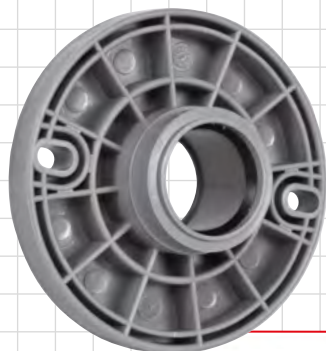
Item no. 91110WS



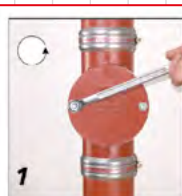
Fire behaviour: Tested according to DIN 4102-B2, EN 13501-1E, EN 11925-2.

Because it's easier!

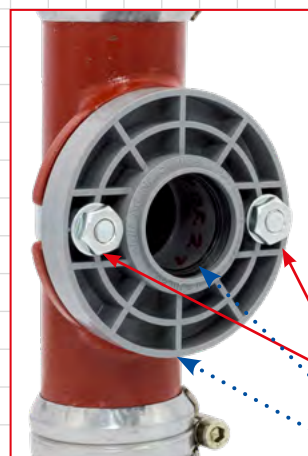
Airfit Flange Adapter for retrofitting on cast iron cleaners for discharging waste water from condensing boilers, wash basins, sinks, etc. Remove the screw cap from the cast iron cleaner and screw in the **Airfit Flange Adapter**.



Fire behaviour:
Tested according to DIN 4102-B2,
EN 13501-1E, EN 11925-2.



Flange adapter DN 50/40 made of PP



Set



Item no. 5040FA

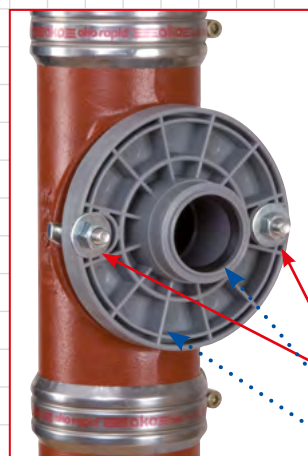
Hole spacing 77 - 83 mm

DN 40

DN 50

NEW!

Flange adapter DN 110/50 made of PP



Set



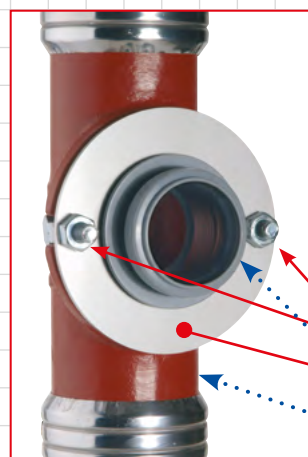
Item no. 11050FA

Hole spacing 125 - 143 mm

DN 50

DN 110

Flange adapter DN 75/50



Set



Item no. 7550FA

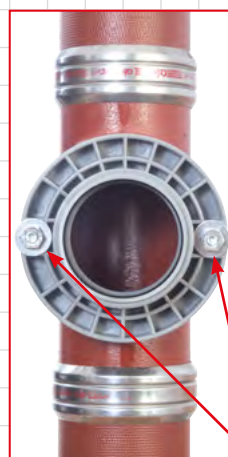
Hole spacing 100 - 105 mm

Stainless steel

DN 50

DN 75

Flange adapter DN 110/110 made of PP



Set



Item no. 119110FA

Hole spacing 125 - 143 mm

All flange adapters fit the old black cast iron pipes. (CI pipes)

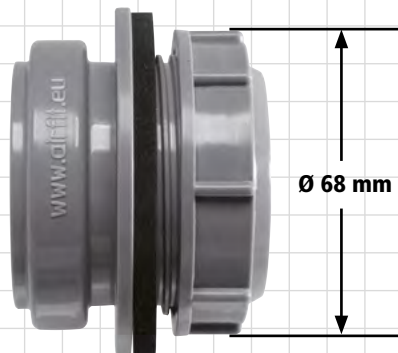
Because it's easier!



Airfit

Screw-in sleeve DN 50

Airfit Screw-in Sleeve DN 50 for retrofitting of HT cleaners from DN 75 onwards for the discharge of waste water from condensing boilers, sinks, washing machines, etc.



Screw-in sleeve
DN 50 - grey

Item no. 50000AM



Screw-in sleeve DN 50 - green

UV-stabilised

Item no. 50001AM

Pipe connections for containers



Accessories: Circle cutter
Ø 59 mm

Item no. 20059KS

Drilling depth 47 mm
Complete, for plastic.



Accessories: Circle cutter Ø 59 mm

Item no. 21059KS

Drilling depth 47 mm
HSS bimetallic, complete, for plastic and metal. When working on metal pipes, use lower speeds and cutting oil.



DN 75



DN 110



≥ DN 110



DN 125



DN 50

* Drill hole, deburr, insert screw-in sleeve, screw on cap nut.

Made of PP, Fire behaviour: Tested according to DIN 4102-B2, EN 13501-1E, EN 11925-2.

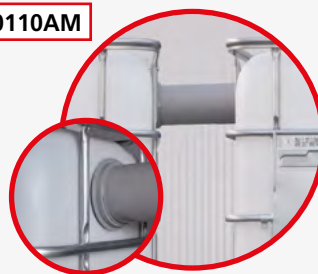
Screw-in sleeve DN 110



DN 110

Item no. 50110AM

DN 110



Accessories: Circle cutter Ø 121 mm

Drilling depth 47 mm

HSS bimetallic, complete, for plastic and metal. When working on metal, use lower speeds and cutting oil.

Item no. 20121KS

Cut a hole using a circle cutter and screw in the screw-in sleeve. And that's it!



Ø 121

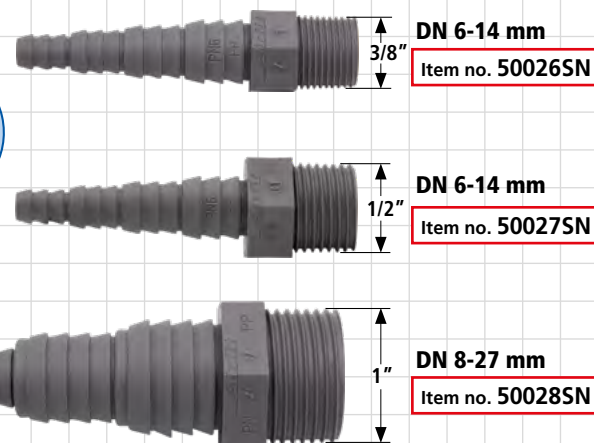
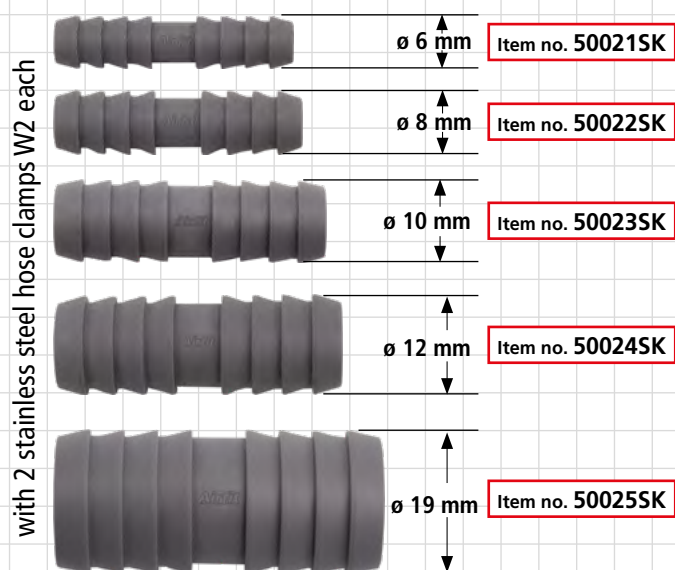
Ø 135



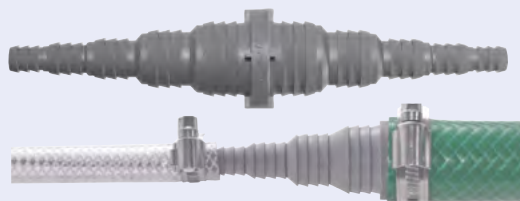
Because it's easier!

Hose connector and -nipple made of PP, hot-water resistant up to 90°C

NEW!



Universal - hose connector double-ended ø 8,4 - 26,5 mm



Item no. 50014SK

- Optimal connection of different pipe sizes
- Simply cut to size
- Made of PP
- Hot-water resistant up to 90°C

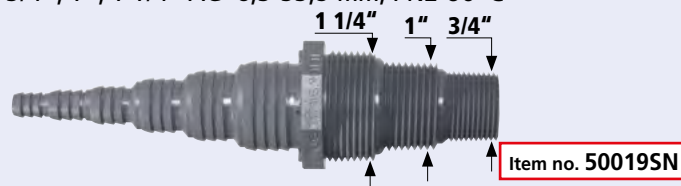
Hose nipple universal made of PVC

3/4" AG 8,3-26,5 mm, PN2 60°C

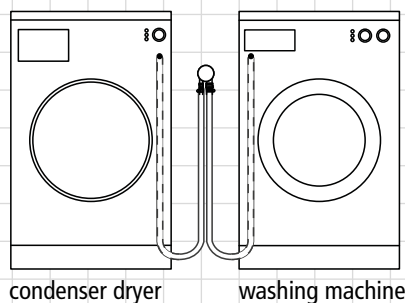


Pump nipple universal made of PVC

3/4", 1", 1 1/4" AG 8,3-33,5 mm, PN2 60°C



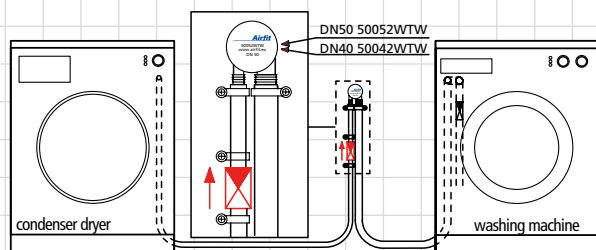
Optimal double connection adapter for washing machines and condenser dryers made of PP, hot-water resistant up to 90 °C



Thanks to the sagging hoses, a siphon is no longer needed.

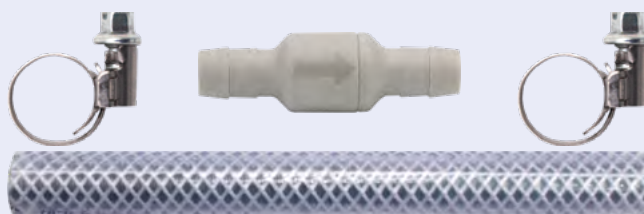
Backflow preventer set for condenser dryers

NEW!



The set consists of:

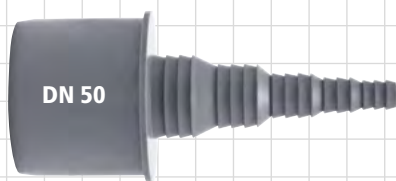
Item no. 50060WTW



Hose nipple made of PP

- hot-water resistant up to 90 °C

Fire behaviour: Tested according to DIN 4102-B2,
EN 13501-1E, EN 11925-2.



DN 50 8,2-26,5 mm Item no. 50011SN



DN 40 8,2-26,5 mm Item no. 50013SN

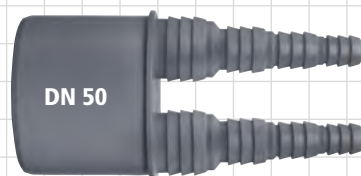


DN 32 8,5-26,5 mm Item no. 50015SN

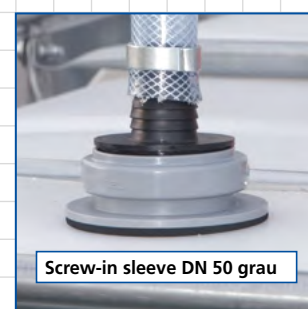
Condensate set



Double hose nipple made of PP



DN 50 8,3-20,5 mm Item no. 50020SN



Angle hose made of PP



DN 50 18-21,7 mm

Item no. 50010SW



DN 40 18-21,7 mm

Item no. 50040SW



DN 40 8,5-26,6 mm

Item no. 50016SW



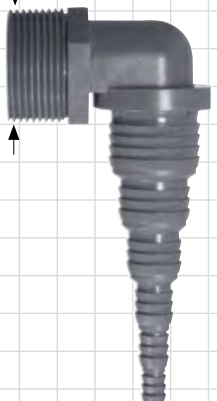
Simply cut to size:

1 1/4"

Pump angle universal made of PVC

1 1/4" AG, 8,3-33,5 mm, PN2 60°C

Item no. 50018SW



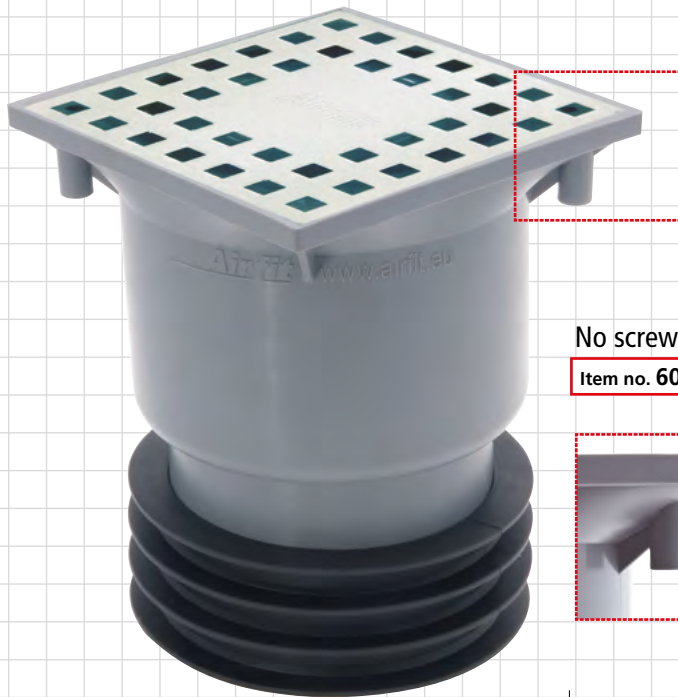
Optimal transition from
hose to drain pipe.

Because it's easier!

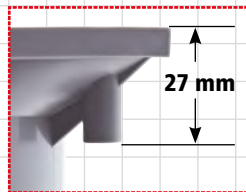
The most versatile floor drain ever.

**Insert the
"Professional!"
And that's it!**

Height adjustable. Rotatable. Tilttable.

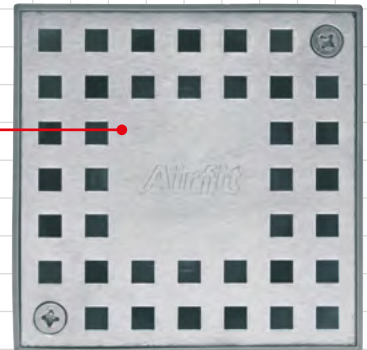


No screw fitting
Item no. 60200BA

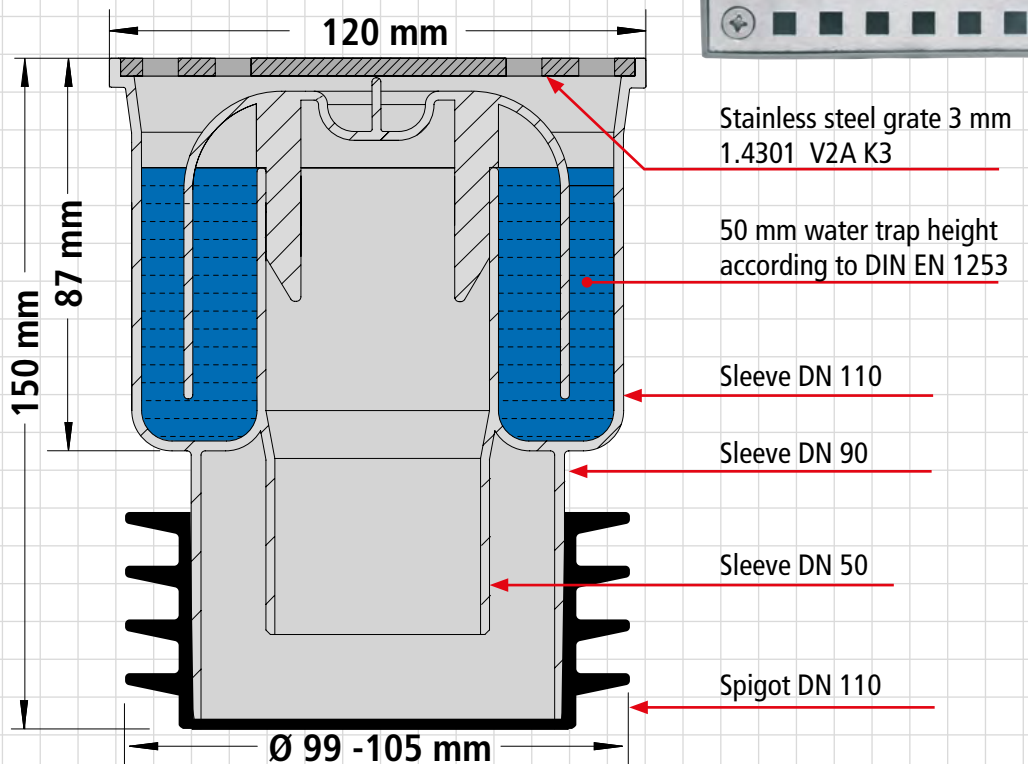
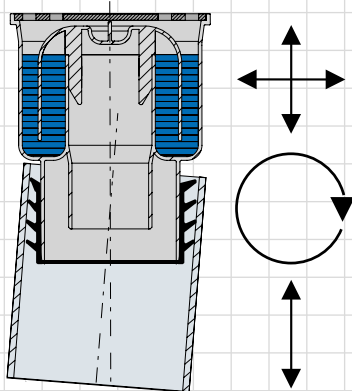


Stainless steel grate

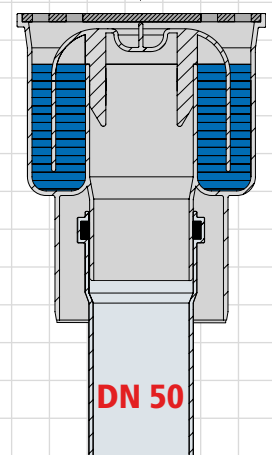
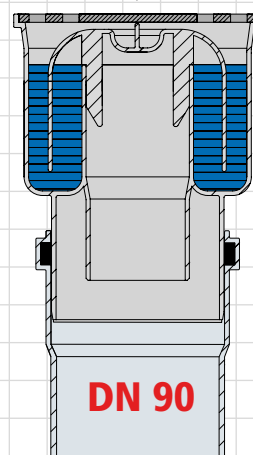
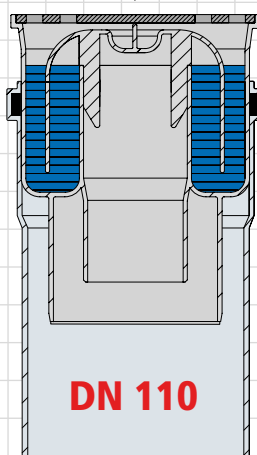
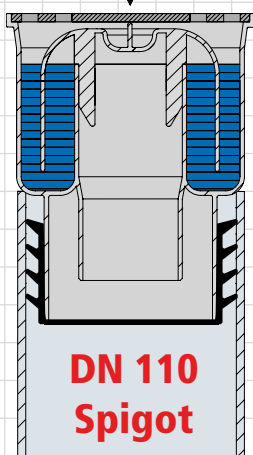
Screwed
Item no. 60201BA



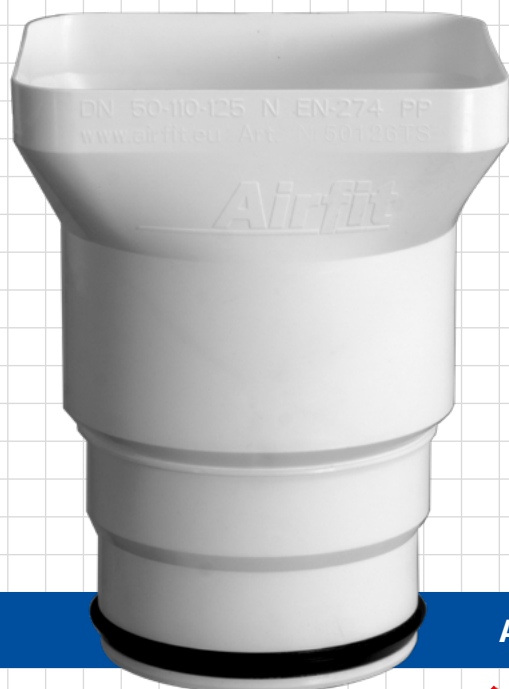
- Pulling out the siphon insert provides a cleaning aperture.
- Impact-resistant PP housing.
- Removable ribbed seal.



Fire behaviour:
Tested according to DIN 4102-B2,
EN 13501-1E, EN 11925-2.



Funnel siphon **Airfit Plus** with enlarged inlet area



Item no. 50126TS

**The most easy-to-install
funnel siphon of all time.**

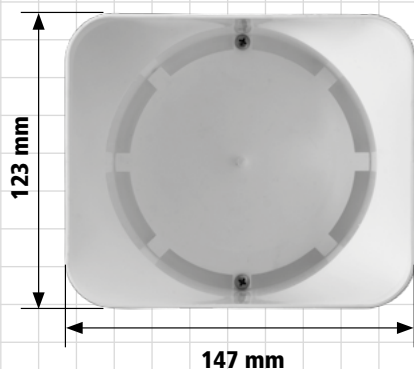
- Assembly time less than 30 seconds.
- No drilling, wall plugs or screws.
- No assembly required.
- Low space requirement.
- Supply from several pipes possible.
- After removal of the inner part, the siphon is used as a cleaning port.
- No tools needed for installation.
- Always tight, as it has no fittings with seals.
- 4 possible pipe connections.
- No fastening required.
- Insert **Airfit** Funnel siphon - **FINISHED!!**



A must for every rooftop control system!



**Drainage output 28 l/min.
Temperature resistant up to 95°C**

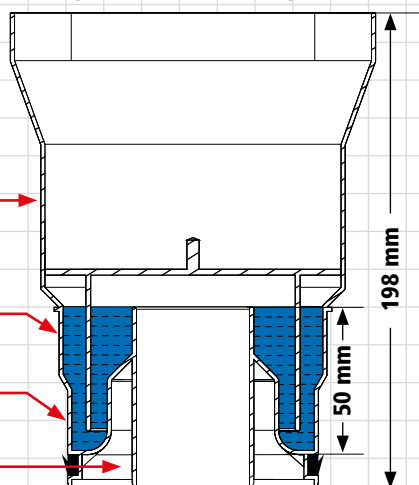


Sleeve DN 125

Sleeve DN 110

Spigot DN 110

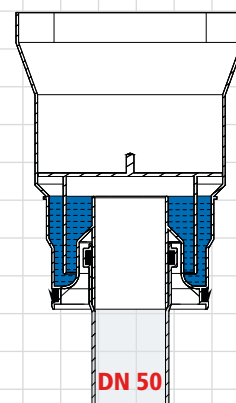
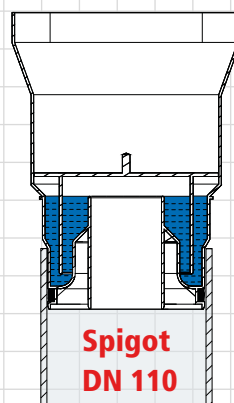
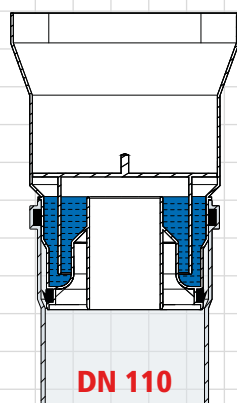
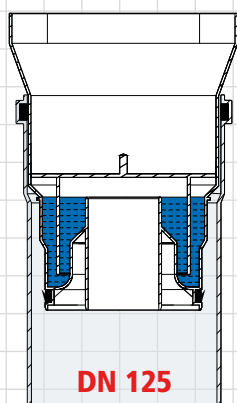
Sleeve DN 50



Standard-compliant water trap height 50 mm

CE seal according
to EN 681

Examples of use:



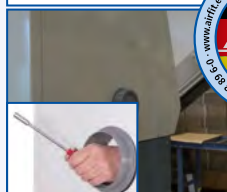
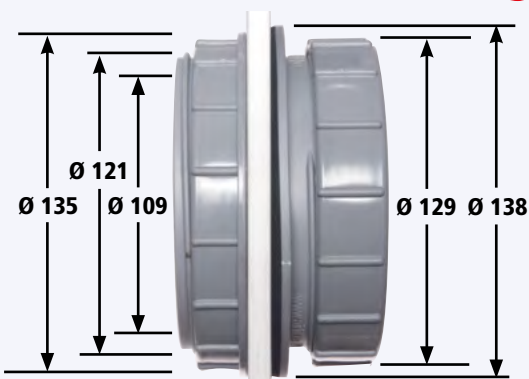
The funnel siphon has been tested according to DIN-EN 274 by MPA-NRW.

Because it's easier!

Cleaning and access opening odour tight and waterproof. For wall, containers, machine covers and much more.

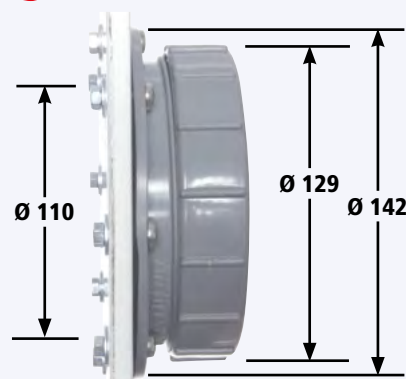
Cleaner screw fitting

Item no. 51400RV



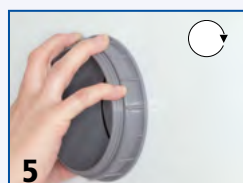
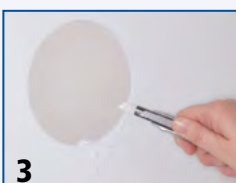
Cleaner flange

Item no. 51300RF



Circle cutter Ø 121 mm required. Item no. 20121KS (Fig. p. 11)

Circle cutter Ø 110 mm required. Item no. 20110KS (Fig. p. 6)

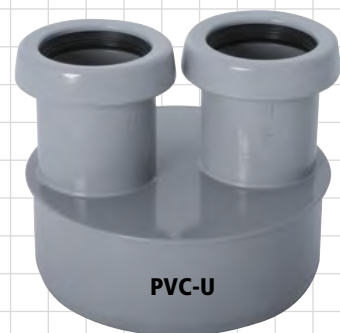


2) Drill hole 3) Deburr 4) Insert 5) Insert screw & tighten 6) Tighten lid FINISHED!

PVC-U reducer

DN 110x40x40

For insertion in PP sleeves or for bonding in PVC-U sleeves.



Item no. 11044KR

CE seal according to EN 681



HT branch continuously adjustable 45°– 88°



Item no. 28150AV

DN 110x50

DN 110 Item no. 28110AV

DN 50 Item no. 28050AV

Item no. 28155AV

DN 110x50x50

Made of PP according to DIN EN 1451B

End plug with screw cap

• Grey • For insertion in a sleeve



Use as a cleaning aperture.

DN 40 Item no. 51040ES

DN 50 Item no. 51050ES

DN 75 Item no. 51075ES

DN 90 Item no. 51090ES

DN 110* Item no. 51110ES

DN 125* Item no. 51125ES

DN 160* Item no. 51160ES

made of PVC

made of PP

Pipe vent made of PP for drain pipes

DIN EN 1451B



DN 40 Item no. 57040RB

DN 75 Item no. 57075RB

DN 50 Item no. 57050RB

DN 110 Item no. 57110RB

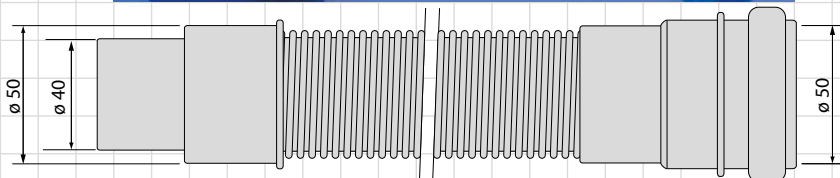
HT connection hose DN 50 flexible

The **discharge and connection hose** is a real problem solver for fast and flexible connection of:

- Shower baths
- Bath tubs
- Sinks, etc.

The connection hose offers the following benefits:

- Almost totally smooth interior.
- Not susceptible to blockages.
- Pressure resistant to 0.5 bar.
- Heat-resistant: up to 100°C (short-term).
- Made of liquor- and heat-resistant plastic.
- Sleeve connection DN 50.
- Spigot DN 50 – DN 40.
- Solid and stable design.



Item no. 50225AS Length 250 mm

Item no. 50500AS Length 500 mm

Item no. 50750AS Length 750 mm

Item no. 51000AS Length 1000 mm

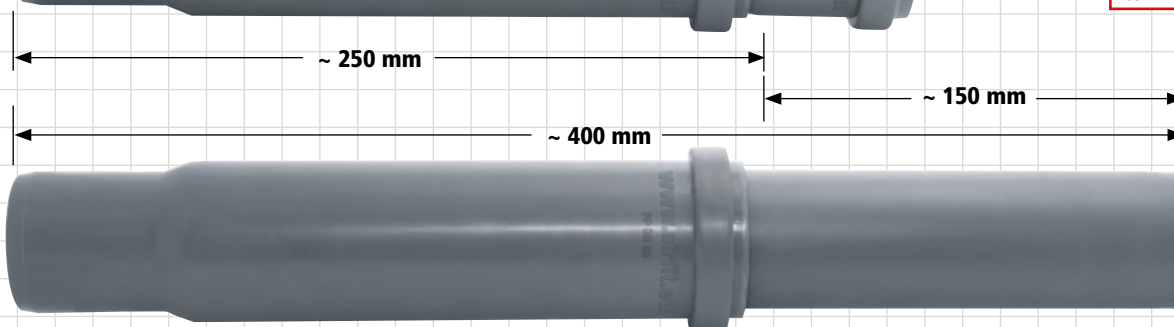
Telescopic pipe DN 50 variable length ~ 250 to 400 mm

The solution e.g. for connecting shower baths and the subsequent installation of branches.



Significant time savings
and ease of use.

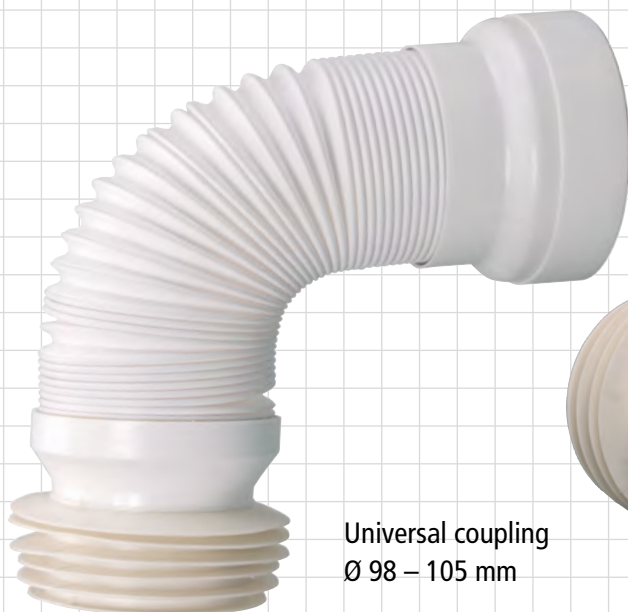
Item no. 50400TR



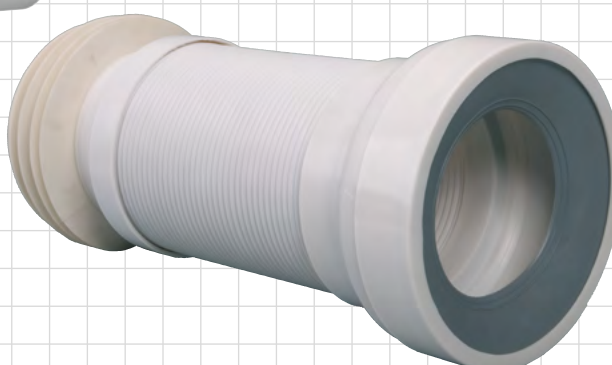
WC connection pipe flexible, white

- Ø 98 – 105 mm
- 285 – 500 mm extendible
- Top quality

Item no. 90010WA



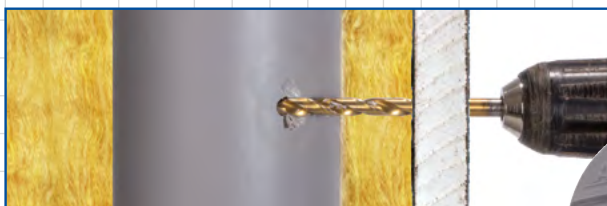
Universal coupling
Ø 98 – 105 mm



Because it's easier!

Airfit Repair Plugs

Everyone knows the problem
with pierced drain pipes in the wall.



The Repair Plugs are suitable for permanent sealing of pierced drain pipes. For all pipe materials. Fix the plug in place with the clamp and tighten carefully.

The solution:
Airfit Repair Plugs!



Item no. 45000RS

Repair plugs
for reordering.
with hose clamps W2
and seal



Dimensions - Item no.

DN 40	Item no. 45040RS
DN 50	Item no. 45050RS
DN 75	Item no. 45075RS
DN 90	Item no. 45090RS
DN 110	Item no. 45110RS
DN 125	Item no. 45125RS



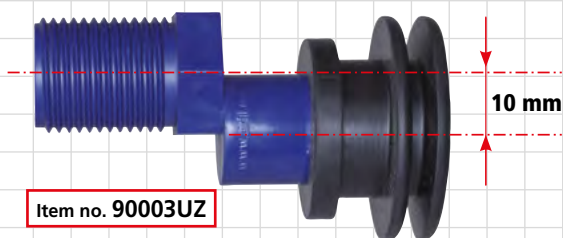
The repair case is a must in any service vehicle!

Urinal intake fittings for UP 1/2" with seal

The problem:

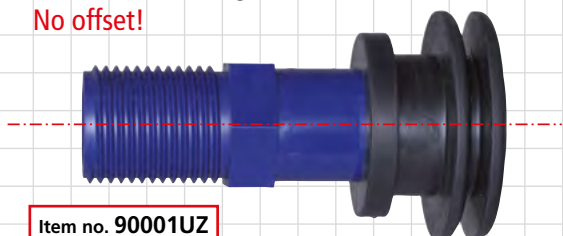
The connection size between the intake and the outflow doesn't match.

Urinal intake fittings for UP 1/2" with seal
10 mm offset!



Item no. 90003UZ

Urinal intake fittings for UP 1/2" with seal
No offset!



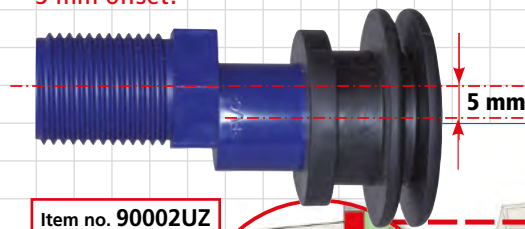
Item no. 90001UZ



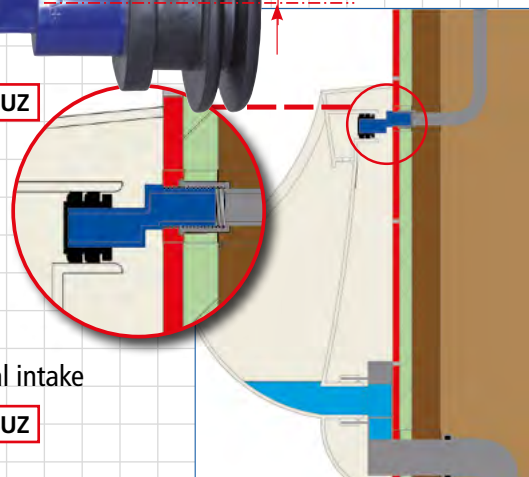
The solution:

The **Airfit** offset intake fittings

Urinal intake fittings for UP 1/2" with seal
5 mm offset!



Item no. 90002UZ



Seal for urinal intake

Item no. 90004UZ

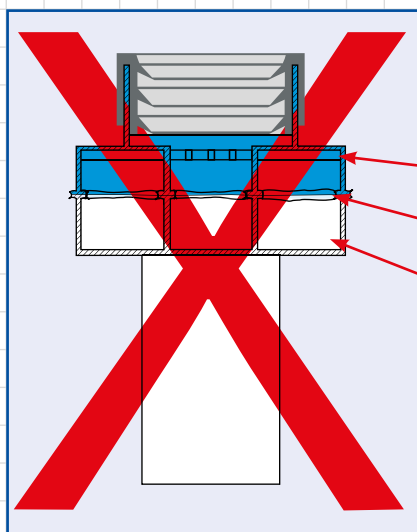
Urinal siphon **Aktiv Cleaner**

- Flush volume 1-4 litres
- Horizontal outlet DN 50 with odour trap

The perfectly smooth and round design dramatically reduces the risk of blockages and formation of urine scale.

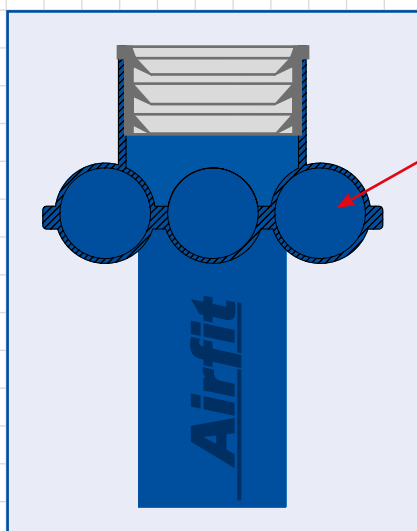
NEW!

Item no. 90000UA



- No protruding reinforcing ribs
- No protruding welding burrs
- No dead water areas where there is no proper flow (deposits)

Cutaway model



Urinal siphon **Aktiv Cleaner**

- Significantly lower risk of clogging thanks to the round design.
- During the rinsing process, foreign bodies (chewing gum, cigarettes, etc.) are rinsed out.
- Low residual water volume, thanks to the round design, less uric acid is left (less urine scale formation).
- The round design increases the number of water changes in the siphon and dramatically reduces urine scale formation.
- Significantly longer service life.

Because it's easier!

Airfit Screw clamp



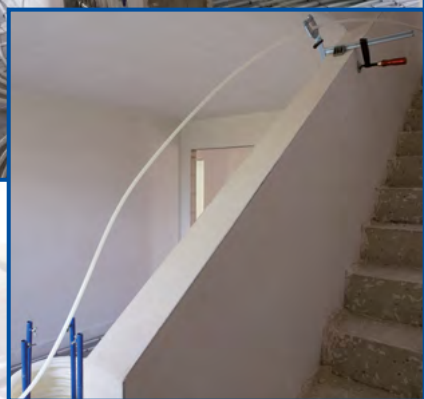
Item no. 20600SZ



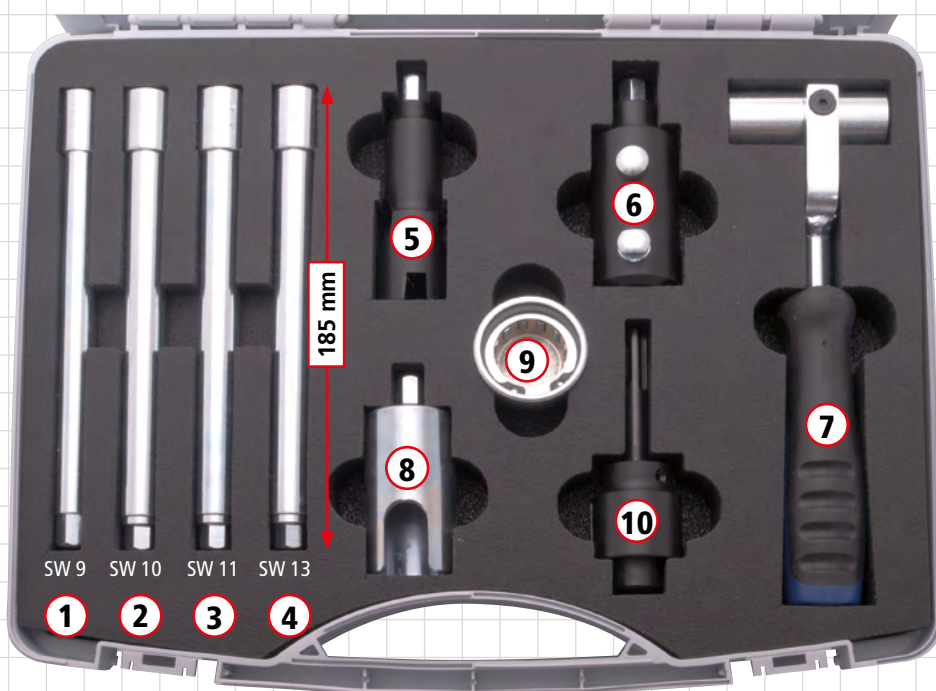
... for simple unrolling or diversion of underfloor heating pipes, cables and hoses, etc.

Simply fit the screw clamp in the doorway or ceiling cavity. Lay the underfloor heating pipe or cable and easily pull tight.

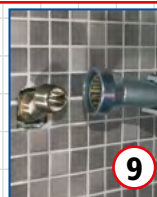
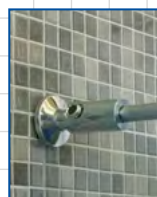
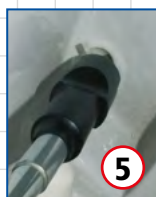
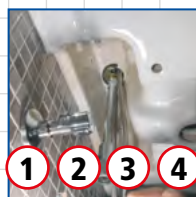
- Significant energy and time savings.
- Temporarily replaces a whole worker.
- Easy to use.



Sanitary fittings case "Professional"



- ① ② ③ ④ Stand fitting spanner, extra long, 185 mm
- ⑤ Spanner for fitting WC seat
- ⑥ Fitting tool for drain valves
- ⑦ Hanger bolt wrench M8/M10
- ⑧ Angle valve fitting aid
- ⑨ S-connection assembly tool
- ⑩ Tap extension miller with SDS shank 1/2"



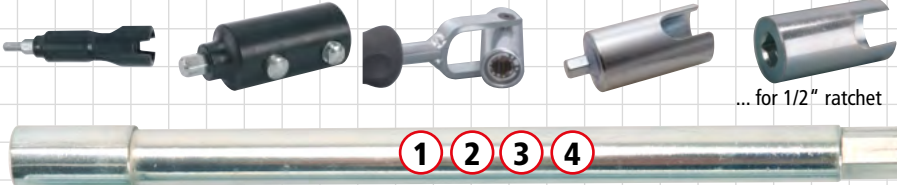
SW 9 Item no. 20509AS Item no. 20714WC Item no. 20504AE Item no. 20501SD Item no. 20514EE Item no. 20503EE Item no. 20100SA Item no. 20500HF

SW 10 Item no. 20510AS

SW 11 Item no. 20511AS

SW 12 Item no. 20512AS

SW 13 Item no. 20513AS



Item no. 20502SA

S-connection assembly tool 3/4"

with 1/2" ratchet socket
or with hexagonal shank
for hanger bolt wrench

⑪
⑨
⑦



- The ideal tool for screwing in and out and also aligning S-angles.
- Small and compact design.
- With 12 hardened steel rollers for optimum distribution of force.
- Low weight.
- A must in every tool kit!

Hanger bolt driver

screwing and unscrewing hanger bolts

- Insert the hanger bolt in the socket.
- Trouble-free turning to the left and right.
- Pull off the socket.

Benefits:

- No need to screw in the hanger bolts.
- Thanks to the hardened rollers, the threads are preserved and not damaged.
- When unscrewing, the hanger bolt cannot fall out of the tool.

M 6 - hex shank

Item no. 20206SS

M 8 - hex shank

Item no. 20208SS

M10 - hex shank

Item no. 20210SS

M12 - hex shank

Item no. 20212SS

M 6 - SDS shank

Item no. 20306SS

M 8 - SDS shank

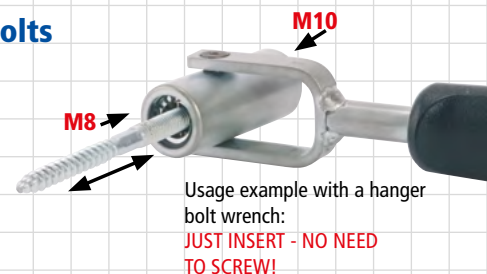
Item no. 20308SS

M10 - SDS shank

Item no. 20310SS

M12 - SDS shank

Item no. 20312SS



Usage example with a hanger bolt wrench:
JUST INSERT - NO NEED TO SCREW!



Hexagonal shank

SDS shank

Because it's easier!

Airfit Double Sliding Sleeve Plus

The problem

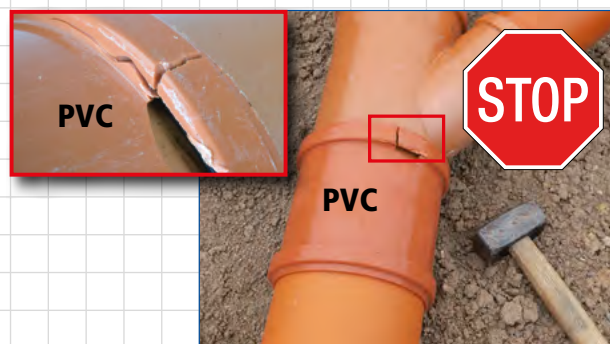
with standard double sliding sleeves.

Every fitter knows the problem!

When installing conventional double sliding sleeves, it is hard to gain purchase to push it back and your grip is constantly slipping. Using a hammer and mallet dents the seal grooves. These crack and burst.

Hairline cracks appear and widen over time.

The next leak test of the ground pipes involves significant costs and extensive clean-up work.



The solution

Airfit Double Sliding Sleeve Plus



Thanks to the **two solid stop collars**, it is no problem to apply a crowbar or a pipe and then the **Airfit Double Sliding Sleeve Plus** can easily be pushed onto the end of a pipe.

Benefits:

- No more damaging seal grooves.
- No more hairline cracks caused by impacts.
- Permanently sealed.
- Low risk of warranty claims.
- Less consequential damage.
- Less stress with planners, architects, authorities and developers.
- Made from environmentally sound PP.
- High resistance to impacts, even at low temperatures.

In the building

Fire behaviour: Tested according to DIN 4102-B2, EN 13501-1E, EN 11925-2.

**DN 110
+ 16 mm***



Item no. 30110HT

**DN 125
+ 12 mm***



Item no. 30125HT

**DN 160
+ 29 mm***



Item no. 30160HT

CE seal according to EN 681



For underground pipes

**DN 110
+ 8 mm***



Item no. 30110KG

**DN 125
+ 4 mm***



Item no. 30125KG

**DN 160
+ 11 mm***



Item no. 30160KG

**DN 110
+ 8 mm***



Item no. 31110KG

**DN 125
+ 4 mm***



Item no. 31125KG

**DN 160
+ 11 mm***



Item no. 31160KG

* Longer than required by EU standard



DN 110 Item no. 50110RK
DN 125 Item no. 50125RK
DN 160 Item no. 50160RK
DN 200 Item no. 50200RK

White Item no. 50051WRK



DN 50

Grey Item no. 50050GRK



DN 50

normal flow
lift in position OPEN



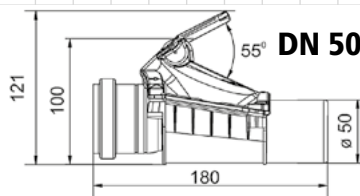
DN 50

automatic blockade
lift in position OPEN



DN 50

manual blockade
lift in position CLOSE



DN 50

Maximum operating temperatur: 95 °C

Double backflow valve



DN 110 Item no. 59110DRK
DN 160 Item no. 59160DRK

Backflow valve with additional manual closure EN 13564

- Simple maintenance.
- Simple and problem-free installation in new and old buildings.
- The lid protector and all fasteners and screws, nuts, washers are made of stainless steel.
- For sewage-free waster water.
- Flap closes automatically with an additional manually controllable emergency closure.
- Backflow protection and vermin protection.

TOTAL INSTALLATION LENGTH

DN 50 = 180 mm
DN 110 = 287 mm
DN 125 = 318 mm
DN 160 = 367 mm
DN 200 = 480 mm



Backflow valve for vertical fitting

This backflow valve for installation in vertical drain pipes is the most convenient solution and often the only option for protecting buildings from flooding.



Automatic closure of the valve in case of backflow.

DN 110 Item no. 58110RKS

DN 50 Item no. 58050RKS



DN 50

For drainage pipes



DN 110 Item no. 33110REK

Pipe end cap

For preventing backflows and vermin.

DN 110 Item no. 32110REK

DN 160 Item no. 32160REK

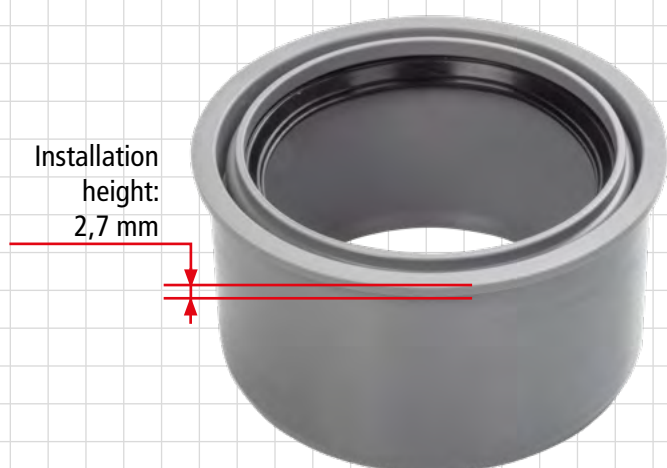
DN 200 Item no. 32200REK

For underground waste pipes



Because it's shorter!

Ultra-short reducer for insertion in pipe sleeves



Minimum installation height



CE seal according to EN 681

NEW!

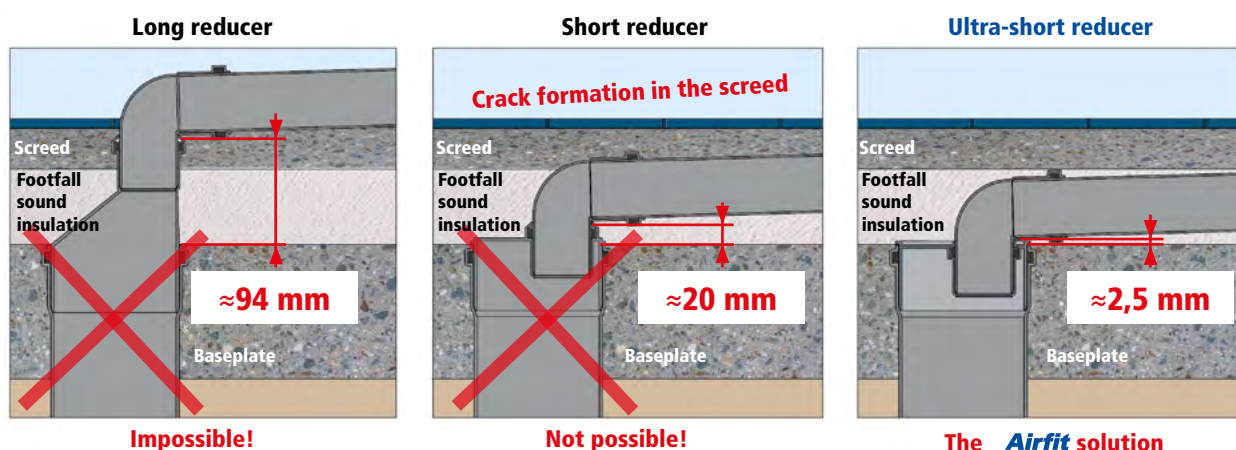
Made of PP, hot water resistant.

Fire behaviour:

Tested according to DIN 4102-B2, EN 13501-1E, EN 11925-2.

						
made of PVC						
4,0 mm installation height	3,1 mm installation height	2,7 mm installation height	2,7 mm installation height	3,0 mm installation height	3,0 mm installation height	2,2 mm installation height
DN 160/110	DN 125/110	DN 110/90	DN 110/75	DN 110/50	DN 110/40	DN 90/75
Item no. 81601SK	Item no. 81251SK	Item no. 81109SK	Item no. 81107SK	Item no. 81005SK	Item no. 81004SK	Item no. 89075SK
						
Z-42.1-366	Z-42.1-366	Z-42.1-366	Z-42.1-366	Z-42.1-366	Z-42.1-366	Z-42.1-366
2,3 mm installation height	2,3 mm installation height	2,2 mm installation height	2,2 mm installation height	1,9 mm installation height	1,8 mm installation height	14,0 mm installation height
DN 90/50	DN 90/40	DN 75/50	DN 75/40	DN 50/40	DN 50/32	DN 40/32
Item no. 89050SK	Item no. 89040SK	Item no. 87550SK	Item no. 87540SK	Item no. 85040SK	Item no. 85032SK	Item no. 84032SK

Example of use: Pipe installation in screed structure



The pipe stopper

Suitable for hot-dip galvanised steel, SML, HT, PE black. For pipes with an external diameter of 100 to 125 mm with a wall thickness of up to 6 mm.



For retrofitting to all drain pipes or rain standpipes as a cleaning aperture, for indoor and outdoor use. Closes permanently water- and gastight.

The **Airfit** pipe stopper is a must have in any service vehicle!

All metal parts are made of stainless steel.



1) ... no cleaning aperture! 2) Drill hole Ø 76 mm 3) Deburr 4) Fit edge profile, clean 5) Position the pipe stopper 6) Tighten screw – **FINISHED!**

Dismantling: 6 turns to the left and push screw to the stop. Pull out pipe stopper.

An edge profile is supplied to protect the pipe wall when cleaning with a spiral.

Repairing drilled or damaged pipes is no problem at all.



Accessories:
Circle cutter Ø 76 mm
HSS bimetallic, complete, for plastic and metal.
When working on metal pipes, use lower speeds and cutting oil.

Item no. 20076KS

Cut a hole using a Ø 76 mm circle cutter and screw the pipe stopper in.

Because it's easier!

Valve with "super-glued" joint connector.

1/2"

Conical design!

Ø 34 mm

Item no. 15800BV



Replacement hose connector

Item no. 15805SV



Easy disassembly as there are no disturbing RIBS!



- Bleeding.
- Connectivity between hot and cold water (leak testing).
- Flushing connection.
- Connection for leak testing.



- Water extraction possible at any time.
- The **Airfit** building plug valve can be easily tiled over without disassembly.
- Simple test filling of bathtub and shower/ bath to test the outflow for leakages.

The building plug valve, the water supply solution for all builders!

The Airfit building plug valve is a must on any construction site.

Airfit Brass Building Plugs small

The problem:

Stress with building owners and tilers is practically guaranteed!

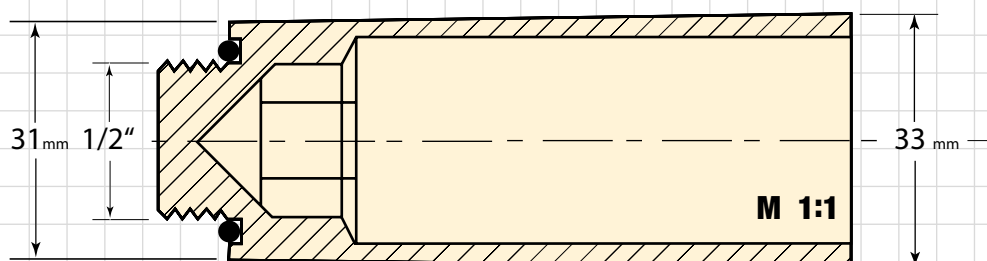
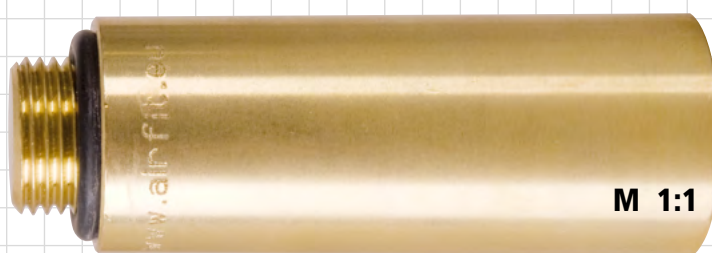
The solution:

The **Airfit** brass building plug small

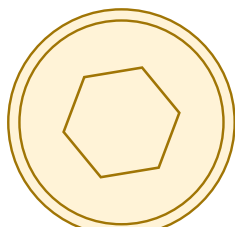
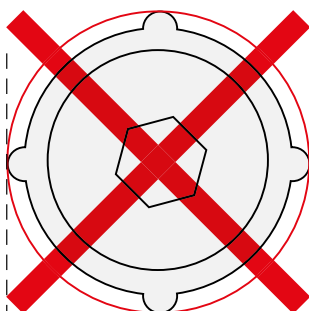
- Always reusable
- External diameter of just Ø=33 mm
- Corresponds to approx. 77 % less surface than plastic plugs
- Approx. 11 mm smaller in diameter than the plastic plug
- Solid brass
- **Corresponds to DIN EN 1717**
- The **Airfit** brass building plug small can remain permanently installed
- Stress with building owners and tilers because of excessively large holes in tiles is a thing of the past.



Item no. 12000BS



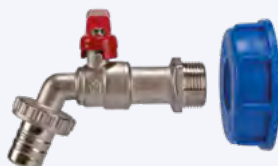
Conventional ≈ Ø 44
≈ 1.450 mm²



Building Plugs small Ø 33
855 mm²

Tank valve

Consists of:
Ball cock and cap nut



3/4" black

Item no. 50650TS

1" blue

Item no. 50655TS



Cap nut

IG 59x6 for IBC-valve



3/4" black

Item no. 50653TS



1" blue

Item no. 50654TS

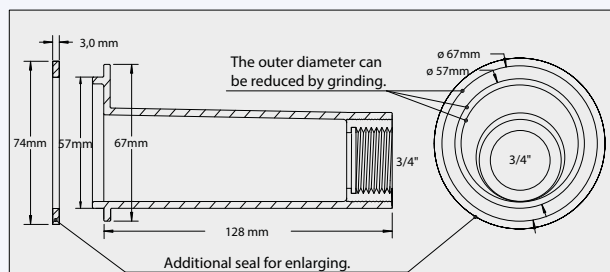
No more need for "DIY". Professional tank accessories from Airfit.

Everyone knows the problem with a broken drain cock. Leaky, frost-damaged or jammed, etc.
Suitable for "Schütz", "Marmor" and "Mauser" tanks with an aluminium cap nut.

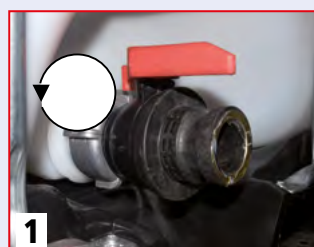
Tank adapter discharge set

Consists of:
Gasket, ball cock, adapter.

Item no. 50500TS



Installation instructions:



Because it's better!

Optimised branch screw connection



! No cross-section narrowing!



Simple installation: Drill a hole (perpendicular to the pipe axis) with $\varnothing 57$ mm, deburr, fit screw-fit branch and tighten. AND THAT'S IT! **Fire behaviour: Tested according to DIN 4102-B2 EN 13501-1E EN 11925-2.**

Accessories: Circle cutter $\varnothing 57$ mm
HSS bimetallic, complete, for plastic and metal. When working on metal pipes, use lower speeds and cutting oil.




Item no. 21057KS

Accessories: Circle cutter $\varnothing 57$ mm
Complete, for plastic.



Item no. 20000KS

DN	 Grey	 Black	 White
90/40	Item no. 29040AZ	Item no. 29042AZ	Item no. 29041AZ
90/50	Item no. 29050AZ	Item no. 29052AZ	Item no. 29051AZ
110/40	Item no. 21040AZ	Item no. 21042AZ	Item no. 21041AZ
110/50	Item no. 21050AZ	Item no. 21052AZ	Item no. 21051AZ
125/40	Item no. 22540AZ	Item no. 22542AZ	Item no. 22541AZ
125/50	Item no. 22550AZ	Item no. 22552AZ	Item no. 22551AZ

Subject to change. Other products in preparation. Illustrations may differ from the original.

info		Nominal size	Outside diameter in mm
HT/KG pipe, Geberit PE pipe, Polokal NG pipe, KG-2000, Raupiano pipe	32	32	
	40	40	
	50	50	
	70	75	
	90	90	
	100	110	
	125	125	
SML pipe	150	160	
	40	48	
	50	58	
	70	78	
	80	83	
	100	110	
	125	135	
black cast iron pipes (CI pipes)	150	160	
	50	60	
	70	80	
	100	112	
	125	137	
stoneware pipe	150	162	
	100	131	
	125	159	
LORO X pipe	150	186	
	40	42	
	50	53	
	70	73	
	80	89	
	100	102	
Skolan pipe	125	133	
	150	159	
	56	58	
	70	78	
	90	90	
Eternit pipe	100	110	
	125	135	
	150	160	
	50	64	
	70	84	
Geberit db 20 pipe	100	116	
	125	141	
	150	168	
	50	56	
	60	63	
	70	75	
Friaphon pipe	90	90	
	100	110	
	125	135	
	150	160	
	50	52	
Zinc downpipe	70	78	
	100	110	
	125	135	
	150	160	
	50	50	
	60	60	
	76	76	
	80	80	
	87	87	
	100	100	
	120	120	



Airfit GmbH & Co. KG

Gewerbegebiet Zingsheim-Süd 40
D-53947 Nettersheim - Germany

tel.: +49 (0) 2486 / 33896 – 0 | fax: +49 (0) 2486 / 33896 – 29
www.airfit.eu | post@airfit.eu
A Zimmermann Group company